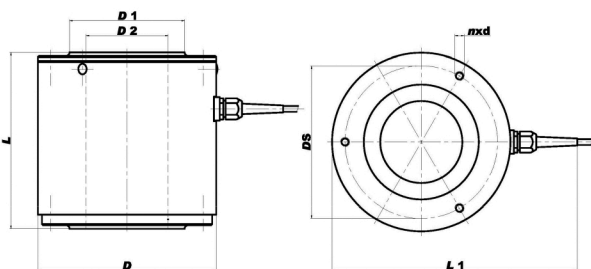


Special features

- Canister design ideal for axial compression applications
- Heavy duty environmentally sealed case for harsh environments
- Full triple strain gauge bridge
- Available with built-in amplifier



Outline Dimensions (mm)



	Rated Capacities kN				
	500	1000	1500	2000	3000
D	152	152	152	152	152
D1	80	90	98	106	120
D2	70	70	70	70	70
DS	130	130	130	130	130
L	150	150	150	150	150
L1	210	210	210	210	210
n x d	3 x M8	3 x M8	3 x M8	3 x M8	3 x M8

Specifications

Parameter	Standard	With Built-in Amplifier
Accuracy class	0.5	
Rated Capacities	500, 1000, 1500, 2000, 3000 kN	
Limit Load	130 % F.S.	
Rated Output	2 mV/V ± 2%	0 ... 10 V (min load 5 kΩ) 4 ... 20 mA (max load 500 Ω)
Zero balance	2 % F.S.	
Non-linearity	0.25 %F.S.	
Hysteresis	0.25 %F.S.	
Creep (30 min)	0.1 %F.S.	
Temperature Effect		
- On Zero	0.1 %F.S./10 °C	0.2 %F.S./10 °C
- On Output	0.1 %F.S./10 °C	0.2 %F.S./10 °C
Input Impedance	1075Ω ± 20Ω	—
Output Impedance	1050Ω ± 10 Ω	—
Insulation Impedance	> 5000 MΩ	—
Excitation		
- Recommended	10 V	24 Vdc
- Maximum	15 V	30 Vdc
Temperature range		
- Compensated	0 ... + 50 °C	
- Operating	- 20 ... + 70 °C	
Protection	IP65	
Deflection at max load	0.2 mm	
Construction	Steel	
Connection	Cable LiYCY 4x0.14, 2 m	

Wiring diagram

