

PRELIMINARY

MCB-402

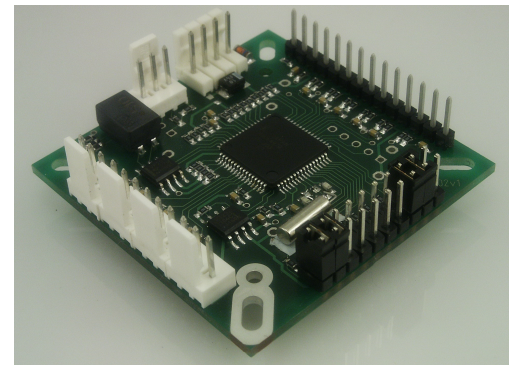
CANOPEN JOYSTICK CONTROLLER

This controller is mountable on the rear side of the joysticks series 812, 825, 826, 892, 813, 891. It is compatible with potentiometers joysticks and almost hall effect joysticks (5V output).

Up to 4 axis are transmitted with 7 buttons. 4 LED drivers are available as digital outputs.

The analog input is sampled with 10 bits, scaled to 16 bits at the CAN output. Note the presence of a programmable neutral zone ($\pm 5\%$). The board is intended to be used by engineers who have a good knowledge of CANOPEN.

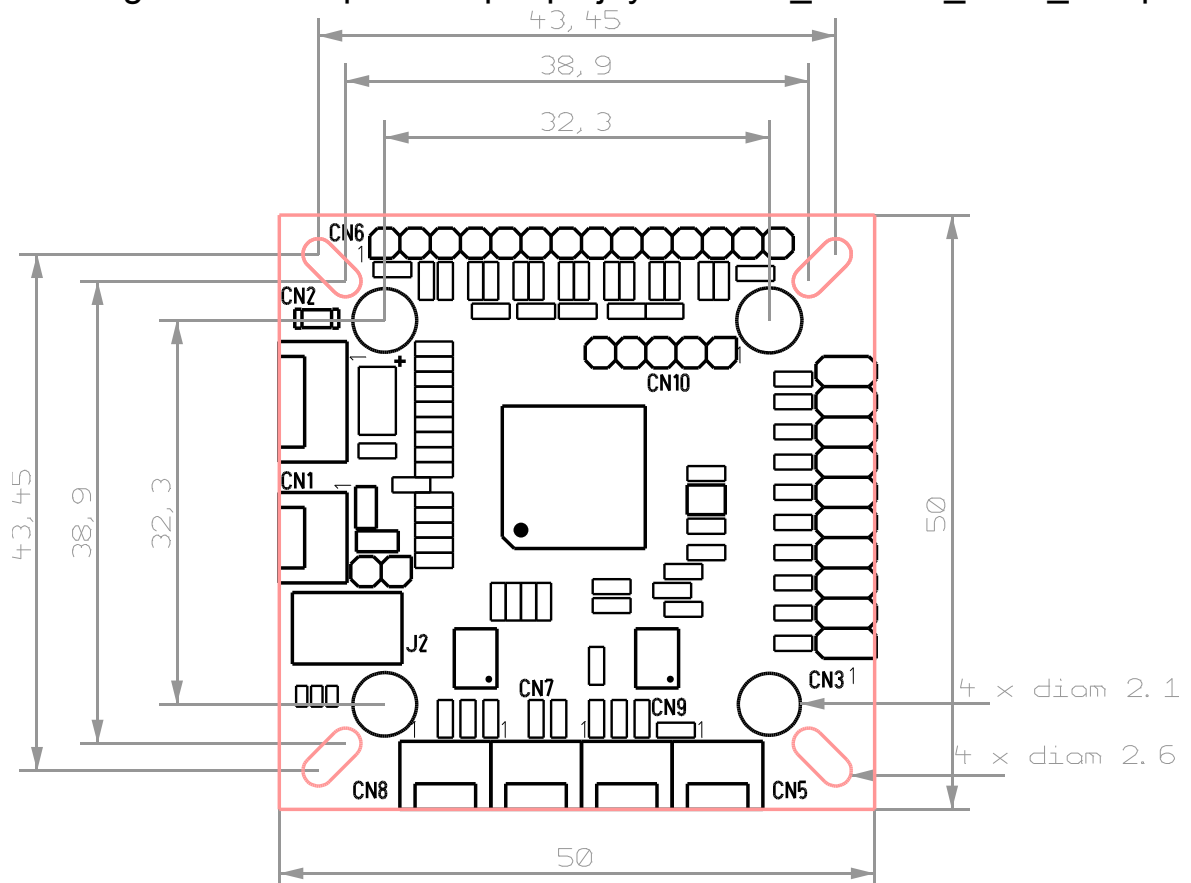
A demonstration kit for PC is available, contact us. It contains an USB/CAN interface box and a demo software.



- CANOPEN DS301 & DS401 compliant
- 4 axis
- 7 push buttons
- 4 LED outputs
- 2 transmit, 1 received PDO

The whole documentation of the MCB-402, convenient for designers is available at:

http://www.megatron.fr/composants/pdf/pdfjoystick/doc_mcb402_1205_e01.pdf



CN6 Buttons inputs (short to GND)											
1			BP7								
3			BP6								
5			BP5								
7			BP4								
9			BP3								
11			BP2								
13			BP1								
2,4,6,8,10,12,14			GND								
Axis inp.		CN5			CN9			CN7		CN8	
1		5 VDC			5 VDC			5 VDC		5 VDC	
2		X axis input			Y axis input			Z axis input		T axis input	
3		GND			GND			GND		GND	
CN1 CAN interface											
1			CAN H								
2			CAN L								
3			GND								
CN2 power supply											
1,2			+5VDC, 50mA + current for joystick								
3,4			GND								
CN3 can settings (short with jumpers)											
20	18	16	K Baud	14	12	10	8	6	4	2	CAN address
1	0	1	500	1	1	1	1	1	1	0	0x1
1	0	0	250	1	1	1	1	1	0	1	0x2
0	1	1	125	1	1	1	1	1	0	0	0x3
0	1	0	50	
0	0	1	20	0	0	0	0	0	0	0	0x7F
2,4,6,8,10,12,14,16,18,20				Inputs (with +5V pullup)							
1,3,5,7,9,11,13,15,17,19,21				GND							
CN10 LED output (max sink 4mA, not short circuit protected)											
1			+5VDC								
2			OUT0								
3			OUT1								
4			OUT2								
5			OUT3								

All connectors at 2,54 mm standard.