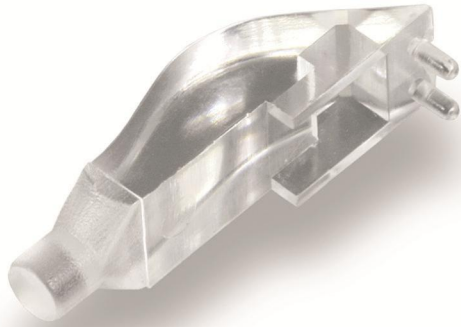


Series EL91F

Article: 405717



Rigid Fibre Optic Light Guides

Fibre Optic Light Guide

Ideal for applications where light from a SMD-LED must be routed to a front panel. Maximum light transmission and a viewing angle up to 120°. Isolates the PCB against ESD.

Material:

Polycarbonat clear, UL 94 V-0

Technical Data EL91F

| | |
|--------------------------------|----------------|
| Material | polycarbonate |
| Fire protection class | UL 94 V-0 |
| Colour | transparent |
| Light redirectors angle | 90 |
| Fiber Type | rigid |
| Number of optical fibers | 1 light pipe |
| Face size Ø in mm | 3 |
| Face shape | round and flat |
| Include LED? | No |
| Color face | transparent |
| Central line (height, X) in mm | 3,8 |

Drawing for Component

