

Series LPR890

Article: 403056



**Stand Offs**

**Circuit Board-Standoff's**

Stackable PCB's in combination with nuts (LPW 300 ff), screws (LPW 303 ff) and mounting sockets (LPW 333-M3 ff).

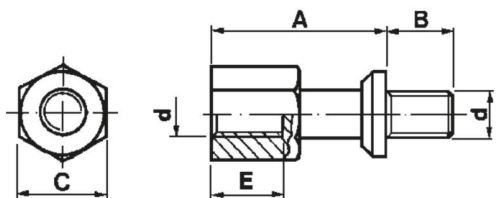
**Material:**

Nylon 66, 25% glassfibre, natural, UL 94 HB, temperature -30°C to +110°C

**Technical Data LPR890**

Distance height in mm	10
Assembly type	screwed
Building Type	Male & female thread
Holding Type	Male thread
Mounting Type	Female thread
Diameter female thread in mm	M3
Thread depth (inside) in mm	5,5
Diameter male thread in mm	M3
Outer Diameter body in mm	5,5
Material	nylon 66
Material additive	25% glass-fibre reinforced
Material of thread	PA66-RV
Fire protection class	UL 94 HB
Colour	natural

**Drawing for Component**



A	Distanzhöhe
B	Gewindelänge (außen)
C	Außendurchmesser (SW)
d	Gewinde
E	Gewindetiefe (innen)